

PATIENTS ARE COMPLEX
CHOOSING A STENT
SHOULDN'T BE

INTRODUCING XIENCE Sierra™

With the safety you've always relied on and the deliverability you've always wanted, choosing the right stent is now an easier decision.

START

Information contained herein for distribution outside the U.S. only.

Check the regulatory status of the device before distribution in areas where CE marking is not the regulation in force.

©2019 Abbott. All rights reserved. AP2944678-OUS Rev. B

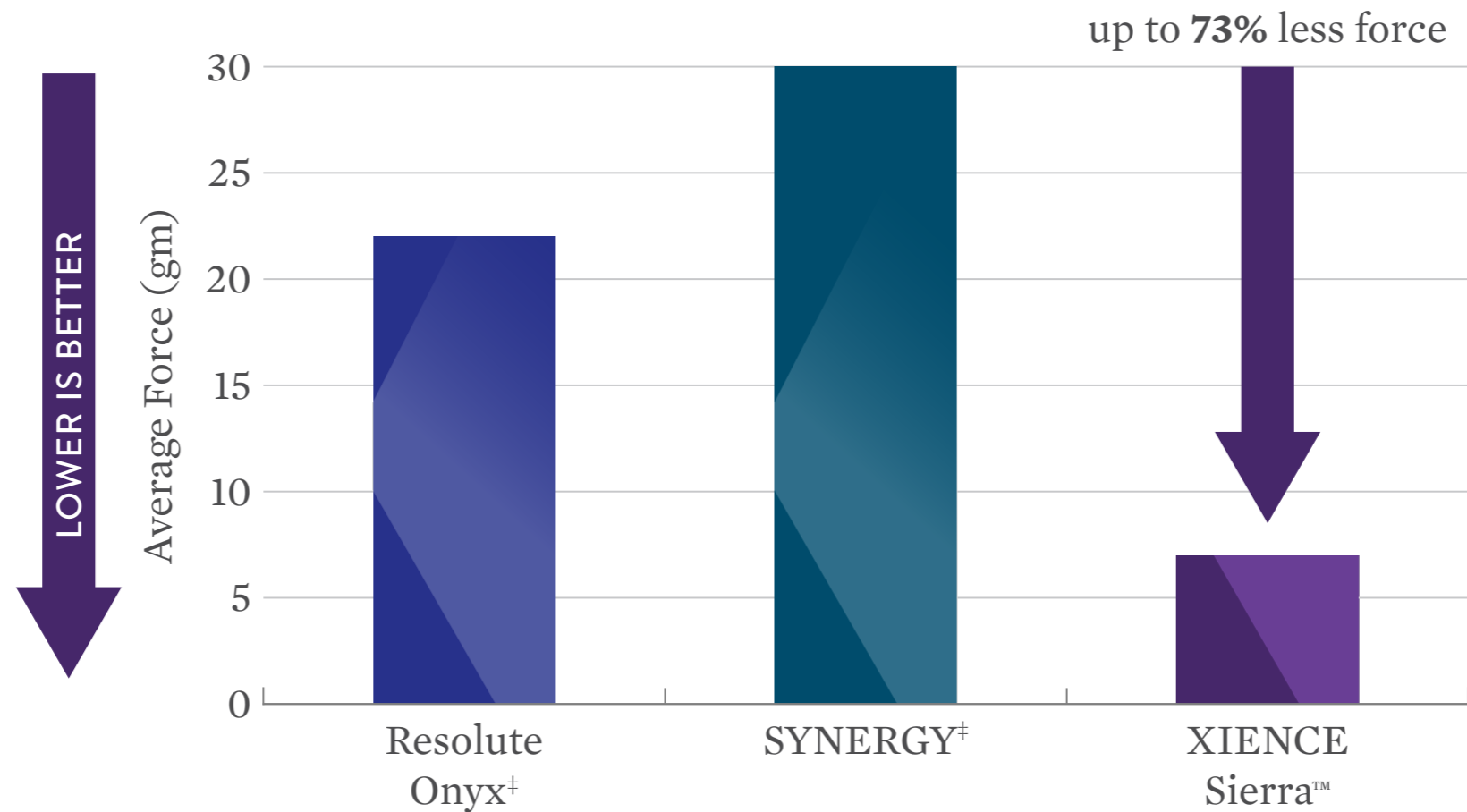
Page 1 of 11

XIENCE Sierra™
Everolimus Eluting Coronary Stent System



Best-in-Class Deliverability¹

XIENCE SIERRA™ REQUIRES 73% LESS FORCE TO CROSS A LESION THAN SYNERGY[‡] AND 64% LESS FORCE THAN RESOLUTE ONYX[‡]



1. Bench test data shows that XIENCE Sierra performed better in crossability and was not statistically different in trackability and pushability compared to Resolute Onyx and SYNERGY stents. Bench test results may not necessarily be indicative of clinical performance. Test performed by and data on file at Abbott. Testing performed on XIENCE Sierra Everolimus Eluting Coronary Stent System (3.0 x 18 mm) n=5, SYNERGY Stent System (3.0 x 20 mm) n=5, Resolute Onyx Stent System (3.0 x 18 mm) n=5. Catheter performance crossability test measures average force to cross a challenging lesion model.

Information contained herein for distribution outside the U.S. only.

Check the regulatory status of the device before distribution in areas where CE marking is not the regulation in force.

©2019 Abbott. All rights reserved. AP2944678-OUS Rev. B

Page 2 of 11

Best-in-Class Deliverability¹

For Even the Most Challenging Lesions²

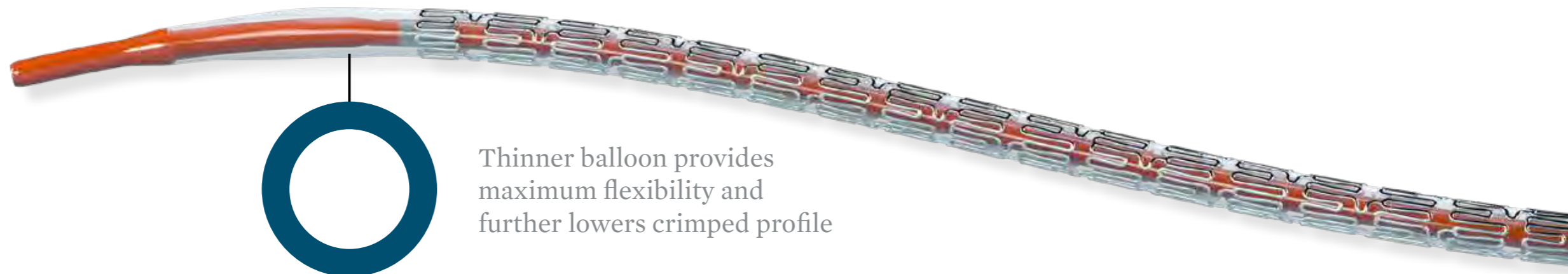
ULTRA LOW STENT CROSSING PROFILE OF 0.039" FOR EASIER CROSSING ENABLED BY THE NEW STENT DESIGN AND BALLOON TECHNOLOGY³

**XIENCE
Sierra™
0.0390"**

**XIENCE
Alpine™
0.0435"**

**SYNERGY⁺
0.0393"**

**Resolute
Onyx⁺
0.0401"**



1. Bench test data shows that XIENCE Sierra performed better in crossability and was not statistically different in trackability and pushability compared to Resolute Onyx and SYNERGY stents. Bench test results may not necessarily be indicative of clinical performance. Test performed by and data on file at Abbott. Testing performed on XIENCE Sierra Everolimus Eluting Coronary Stent System (3.0 x 18 mm) n=5, SYNERGY Stent System (3.0 x 20 mm) n=5, Resolute Onyx Stent System (3.0 x 18 mm) n=5. Catheter performance crossability test measures average force to cross a challenging lesion model.
2. Based on customer feedback on testing XIENCE Sierra in the Synthetic Anatomical Model developed by Abbott.
3. Test performed by and data on file at Abbott. XIENCE Sierra Everolimus Eluting Coronary Stent System (3.0 x 18 mm) n=5, SYNERGY Stent System (3.0 x 20 mm) n=5, Resolute Onyx Stent System (3.0 x 18 mm) n=5.

Information contained herein for distribution outside the U.S. only.

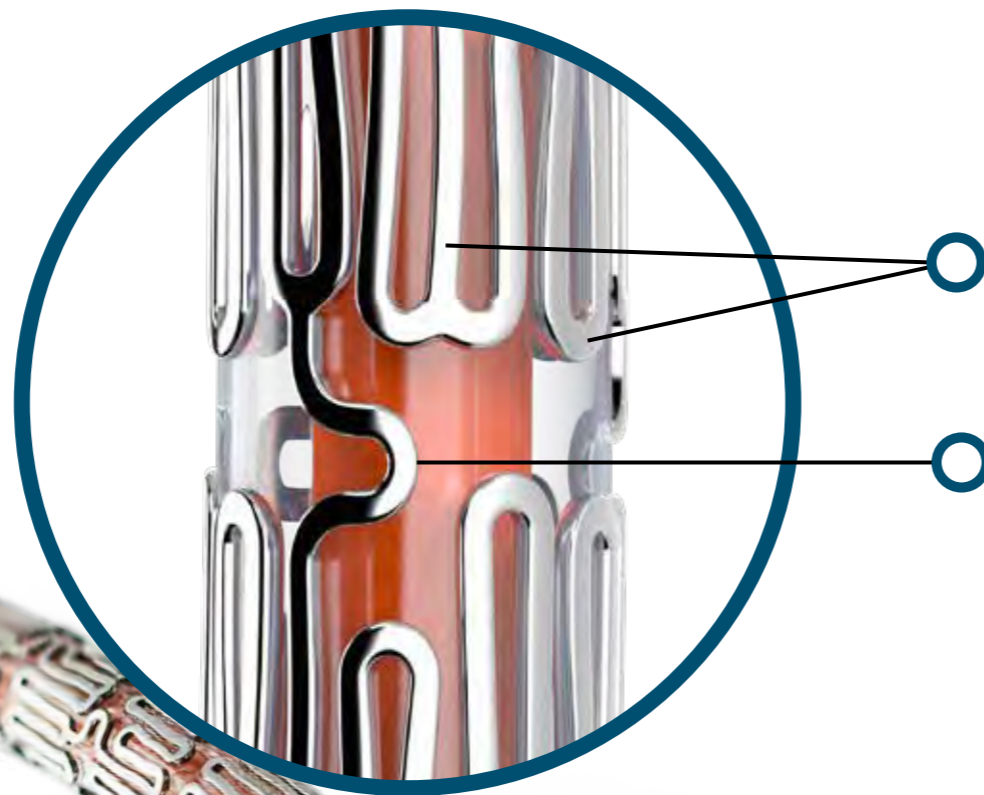
Check the regulatory status of the device before distribution in areas where CE marking is not the regulation in force.

©2019 Abbott. All rights reserved. AP2944678-OUS Rev. B

Page 3 of 11

Best-in-Class Deliverability¹

OPTIMIZED MULTI-LINK™ STENT DESIGN ALLOWS FOR TIGHTER CRIMPING AND SMOOTHER CROSSING



NARROWER
CREST*

SLIMMER, MORE
FLEXIBLE LINKS

*Comparative claims refer to XIENCE Alpine™ stent as comparator.

1. Bench test data shows that XIENCE Sierra performed better in crossability and was not statistically different in trackability and pushability compared to Resolute Onyx and SYNERGY stents. Bench test results may not necessarily be indicative of clinical performance. Test performed by and data on file at Abbott. Testing performed on XIENCE Sierra Everolimus Eluting Coronary Stent System (3.0 x 18 mm) n=5, SYNERGY Stent System (3.0 x 20 mm) n=5, Resolute Onyx Stent System (3.0 x 18 mm) n=5. Catheter performance crossability test measures average force to cross a challenging lesion model.

Information contained herein for distribution outside the U.S. only.

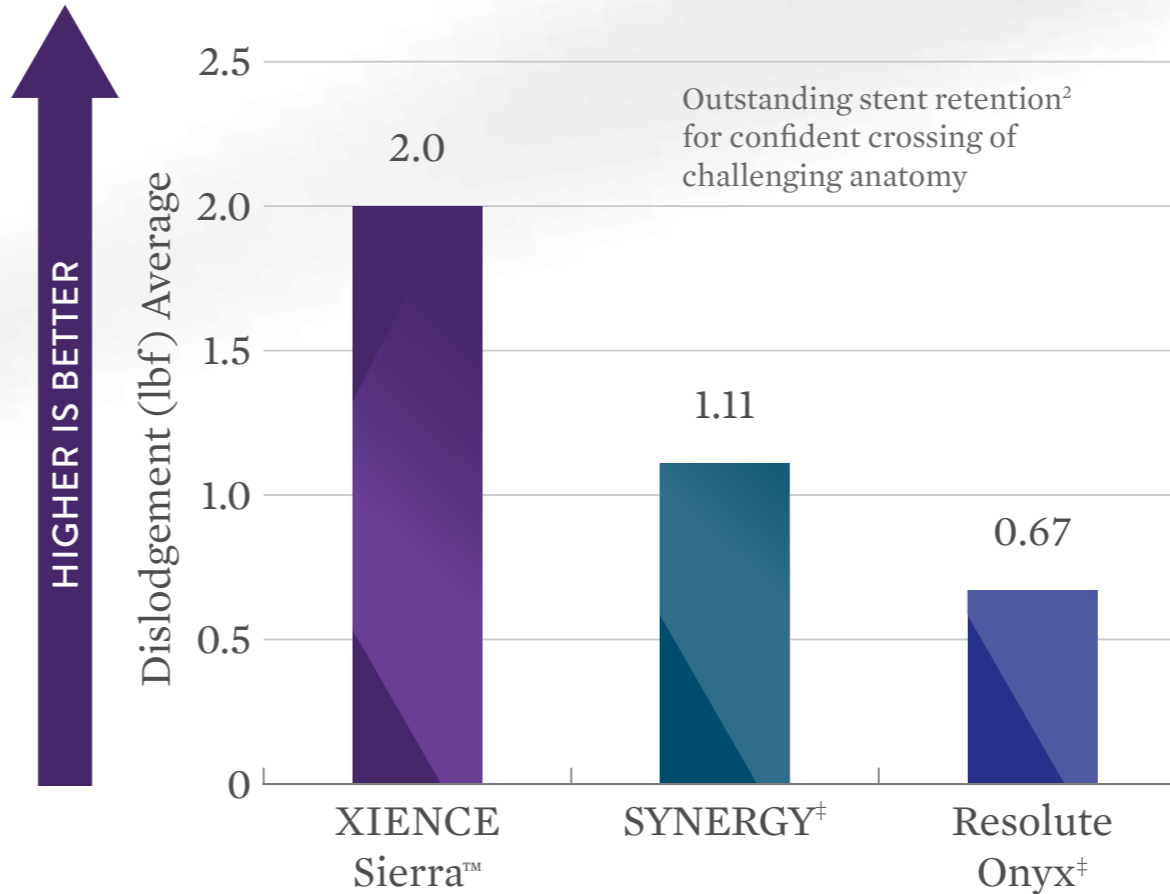
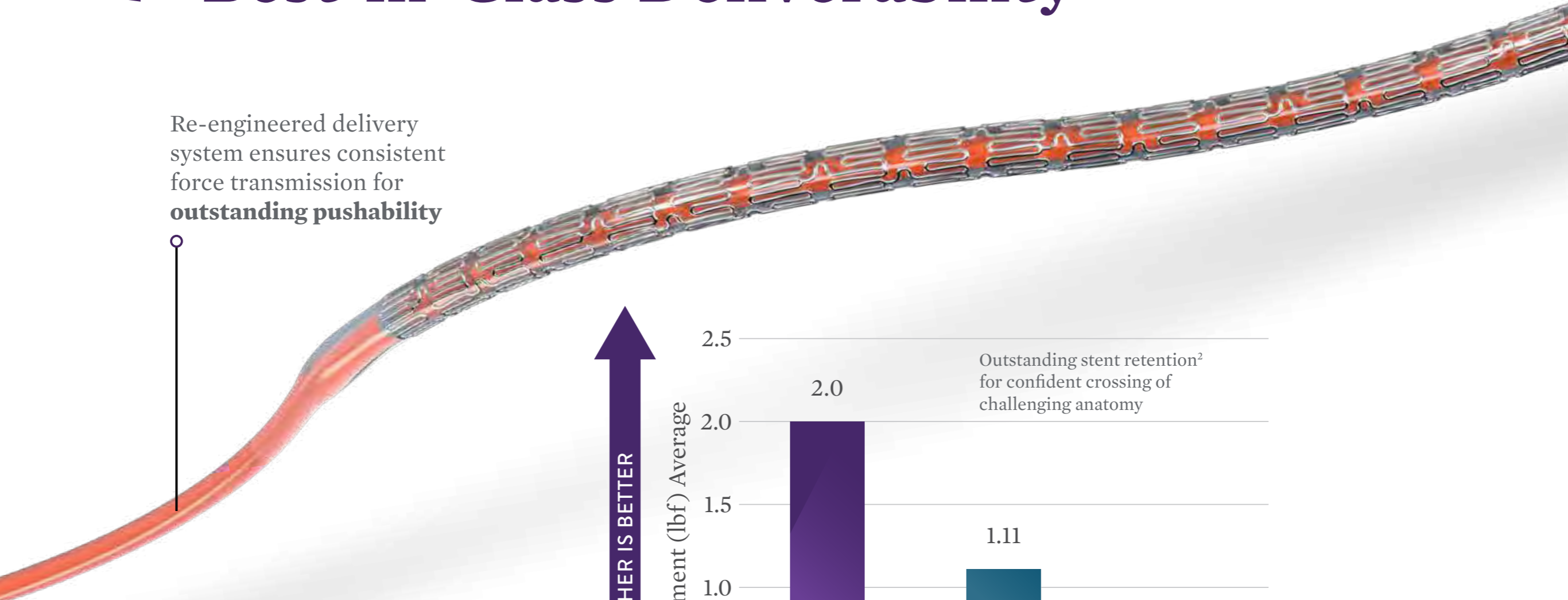
Check the regulatory status of the device before distribution in areas where CE marking is not the regulation in force.

©2019 Abbott. All rights reserved. AP2944678-OUS Rev. B

Page 4 of 11

Best-in-Class Deliverability¹

Re-engineered delivery system ensures consistent force transmission for **outstanding pushability**



1. Bench test data shows that XIENCE Sierra performed better in crossability and was not statistically different in trackability and pushability compared to Resolute Onyx and SYNERGY stents. Bench test results may not necessarily be indicative of clinical performance. Test performed by and data on file at Abbott. Testing performed on XIENCE Sierra Everolimus Eluting Coronary Stent System (3.0 x 18 mm) n=5, SYNERGY Stent System (3.0 x 20 mm) n=5, Resolute Onyx Stent System (3.0 x 18 mm) n=5. Catheter performance crossability test measures average force to cross a challenging lesion model.
2. Test performed by and data on file at Abbott. XIENCE Sierra Everolimus Eluting Coronary Stent System (3.0 x 18 mm) n=5, SYNERGY Stent System (3.0 x 20 mm) n=5, Resolute Onyx Stent System (3.0 x 18 mm) n=5.

Information contained herein for distribution outside the U.S. only.

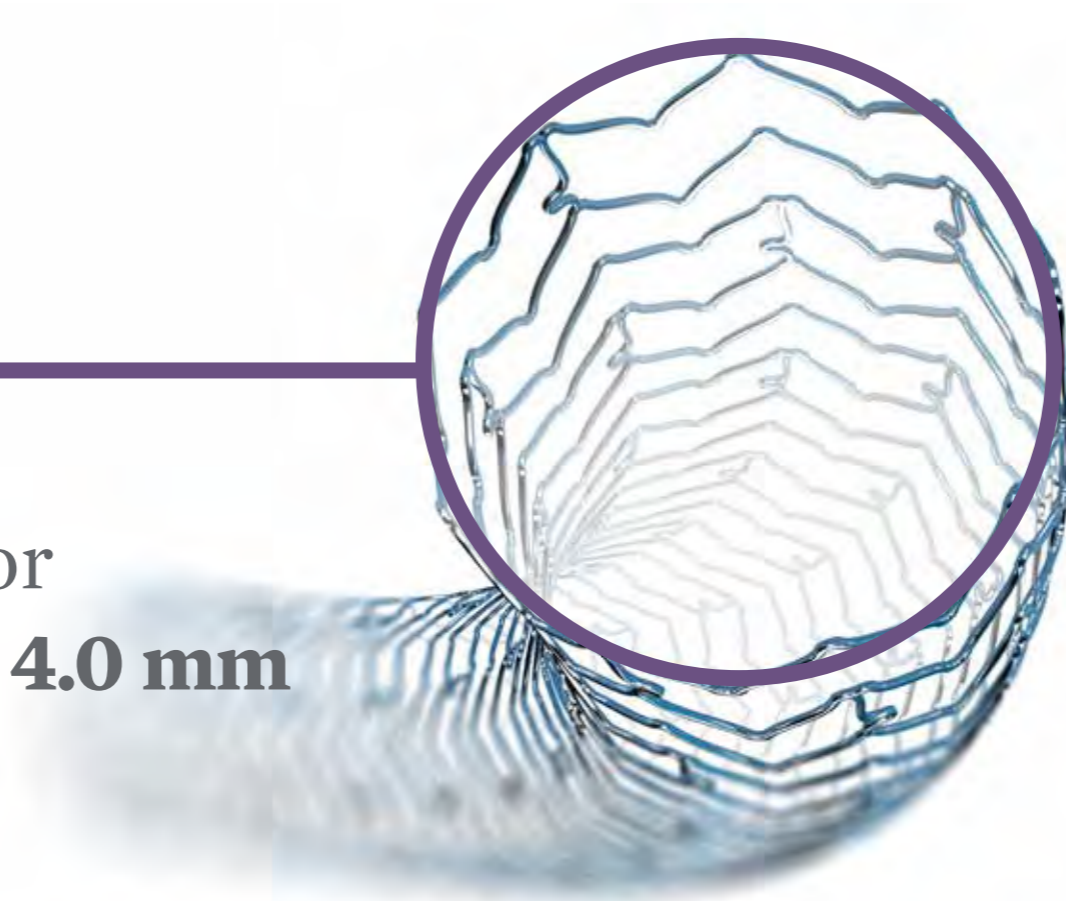
Check the regulatory status of the device before distribution in areas where CE marking is not the regulation in force.

Expanded Treatment Options¹

UNIQUELY DESIGNED TO POST-DILATE TO 5.5 mm

5.5 mm

Maximum
expansion for
3.5 mm and 4.0 mm



1. Increased maximum expansion compared to other XIENCE Everolimus Eluting Coronary Stent System.

Information contained herein for distribution outside the U.S. only.

Check the regulatory status of the device before distribution in areas where CE marking is not the regulation in force.

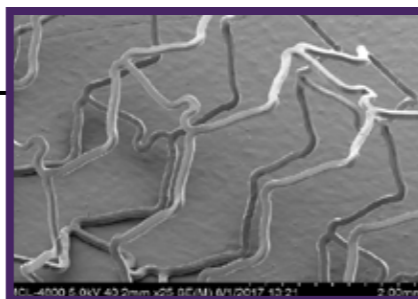
©2019 Abbott. All rights reserved. AP2944678-OUS Rev. B

Page 6 of 11

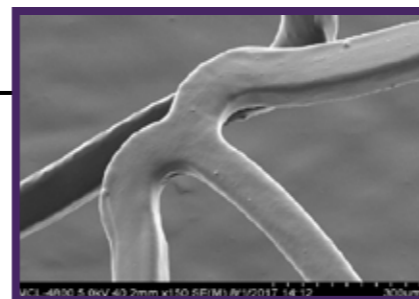
Expanded Treatment Options¹

ENSURES COATING INTEGRITY² EVEN AT MAX EXPANSION

XIENCE Sierra™
(3.5 x 18 mm) 25x
magnification at max
expansion of 5.5 mm

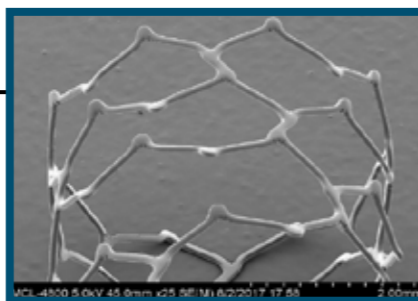


XIENCE Sierra™
(3.5 x 18 mm) 150x
magnification at max
expansion of 5.5 mm



XIENCE Sierra™
coating remains
intact at maximum
post-dilatation
expansion of 5.5 mm
from 3.5 mm

SYNERGY⁺
(3.5 x 20 mm) 25x
magnification at max
expansion of 4.25 mm

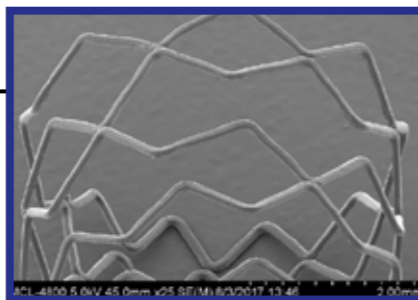


SYNERGY⁺
(3.5 x 20 mm) 150x
magnification at max
expansion of 4.25 mm

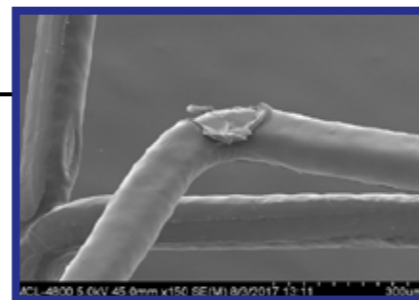


SYNERGY⁺
coating shows
multiple cracks with
delamination at its
max expansion of
4.25 mm from
3.5 mm

Resolute Onyx⁺
(3.5 x 18 mm) 25x
magnification at max
expansion of 4.75 mm



Resolute Onyx⁺
(3.5 x 18 mm) 150x
magnification at max
expansion of 4.75 mm



Resolute Onyx⁺
coating peels off
and shows exposed
metal at its max
expansion of 4.75 mm
from 3.5 mm

1. Increased maximum expansion compared to other XIENCE Everolimus Eluting Coronary Stent System.
2. Test performed by and images on file at Abbott.

Information contained herein for distribution outside the U.S. only.

Check the regulatory status of the device before distribution in areas where CE marking is not the regulation in force.

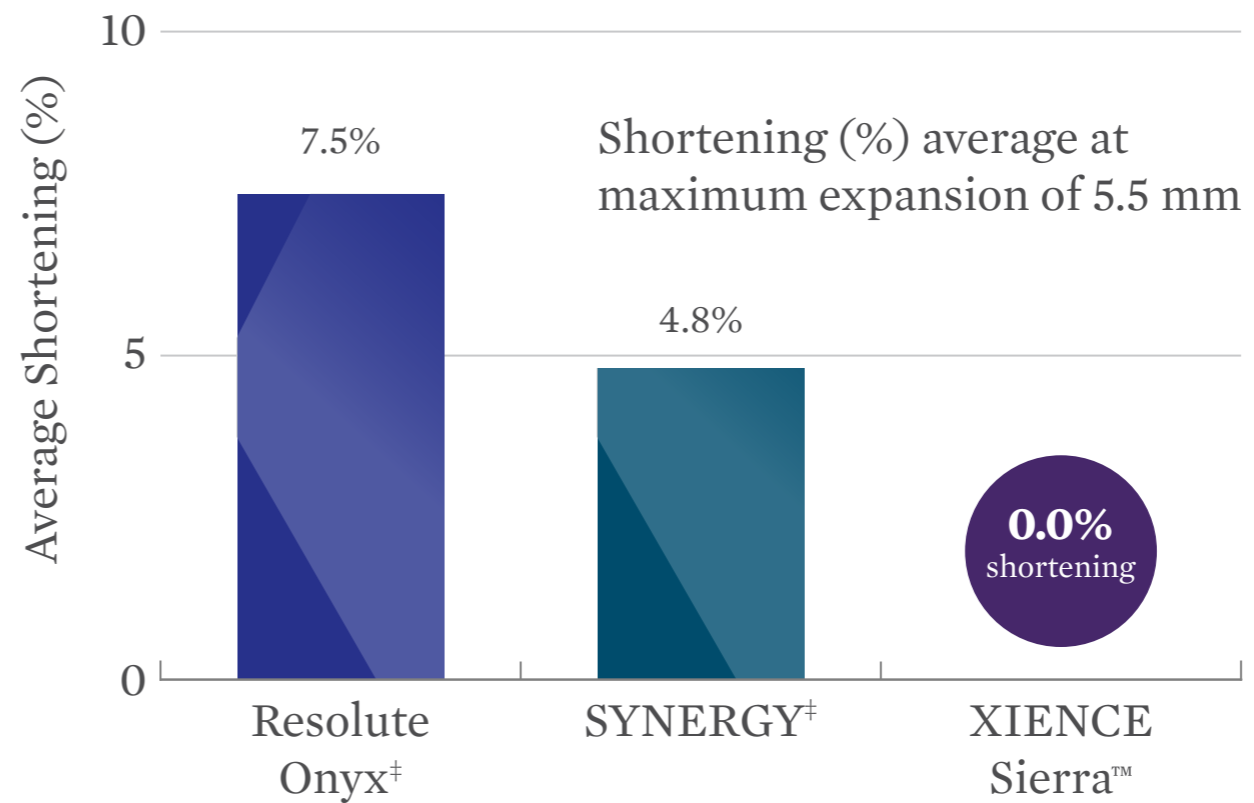
©2019 Abbott. All rights reserved. AP2944678-OUS Rev. B

Page 7 of 11

Expanded Treatment Options¹

PROVIDES UNSURPASSED PRECISION IN PLACEMENT
AND AVOIDS GEOGRAPHIC MISS

ZERO shortening even at
max expansion to 5.5 mm²



1. Increased maximum expansion compared to other XIENCE Everolimus Eluting Coronary Stent System.

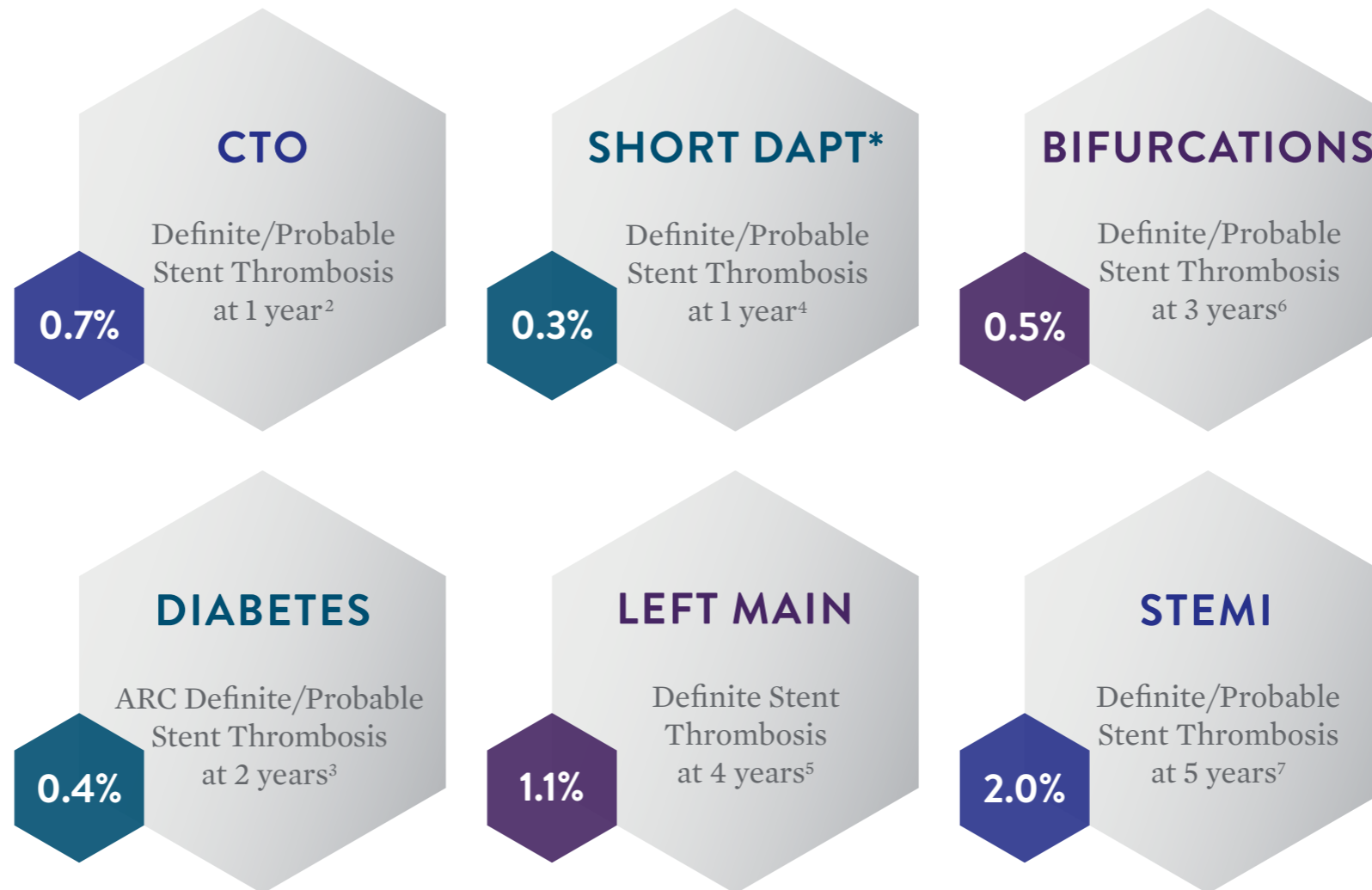
2. Test performed by and data on file at Abbott. XIENCE Sierra Everolimus Eluting Coronary Stent System (4.0 x 18 mm) n=5, SYNERGY Stent System (4.0 x 20 mm) n=5, Resolute Onyx Stent System (4.5 x 18 mm) n=5.

Information contained herein for distribution outside the U.S. only.

Check the regulatory status of the device before distribution in areas where CE marking is not the regulation in force.

Unparalleled Safety¹

XIENCE SHOWS CONSISTENTLY LOW STENT THROMBOSIS RATES IN COMPLEX PATIENTS²⁻⁷



*DAPT Duration of 1 month.

NOTE: Data differences depicted between these trials may not be statistically significant or clinically meaningful and different clinical trials may include differences in the patient populations.

1. XIENCE showed significant benefit compared to several DES and composite BMS in multiple large scale meta-analyses and other RCTs. Source: Palmerini, et al. *The Lancet*. 379:9824, 14-20 April 2012, pp. 1393-1402; Bangalore S, et al. *Circ Cardiovasc Interv*, Aug 6, 2013. doi: 10.1161/circinterventions.113.000415; Valgimigli, Effects of Cobalt-chromium Everolimus eluting or bare metal stent on fatal and non-fatal cardiovascular events. A patient-level meta analysis. EuroPCR 2014; Serruys, PW, et al. RESOLUTE All Comers Trial, *NEJM* 2010. Published online June 16, 2010; Fajadet, J., et al. PLATINUM PLUS 30-day Poster, TCT 2012. 2. Teeuwen, K. et al. "Hybrid Sirolimus-eluting Stents with Biodegradable Polymer versus Everolimus eluting Stents with Durable Polymer in Chronic Total Occlusions (PRISON IV)." *JACC Cardiovasc Interv*. 2017; Jan 23; 10(2): 133-143. DOI:10.1016/j.jcin.2016.10.017. 3. U Kaul. Paclitaxel-eluting stents versus everolimus-eluting coronary stents in a diabetic population: two-year follow-up of the TUXEDO-India trial. *EuroIntervention* 2017; 13:1194-1201. 4. Watanabe, H. et al. One-Month Dual Antiplatelet Therapy Followed by Clopidogrel Monotherapy versus Standard 12-Month Dual Antiplatelet Therapy with Clopidogrel after Drug-Eluting Stent Implantation. STOPDAPT2 Trial. ACC 2019 Presentation. 5. Stone, G. First Presentation of the EXCEL 4-Year Outcomes TCT 2018 Presentation. 6. Lam, M. Three-year clinical outcome of patients with bifurcation treatment with second-generation Resolute and XIENCE V stents in the randomized TWENTE trial. *American Heart Journal*. Vol 169: No 1, Jan 2015. 7. M. Sabaté. Everolimus-eluting stents versus bare metal stents in ST-segment elevation myocardial infarction. Five-year results of the EXAMINATION Trial. *Lancet*, October 29, 2015. [http://dx.doi.org/10.1016/S0140-6736\(15\)00548-6](http://dx.doi.org/10.1016/S0140-6736(15)00548-6)

Information contained herein for distribution outside the U.S. only.

Check the regulatory status of the device before distribution in areas where CE marking is not the regulation in force.

Ordering Information

Expanded sizes*

STENT DIAMETER	LENGTH								POST-DILATATION LIMIT
	8 mm	12 mm	15 mm	18 mm	23 mm	28 mm	33 mm	38 mm	
2.0 mm	1500200-08	1500200-12	1500200-15	1500200-18	1500200-23	1500200-28	1500200-33	1500200-38	3.75 mm
2.25 mm	1500225-08	1500225-12	1500225-15	1500225-18	1500225-23	1500225-28	1500225-33	1500225-38	3.75 mm
2.5 mm	1500250-08	1500250-12	1500250-15	1500250-18	1500250-23	1500250-28	1500250-33	1500250-38	3.75 mm
2.75 mm	1500275-08	1500275-12	1500275-15	1500275-18	1500275-23	1500275-28	1500275-33	1500275-38	3.75 mm
3.0 mm	1500300-08	1500300-12	1500300-15	1500300-18	1500300-23	1500300-28	1500300-33	1500300-38	3.75 mm
3.25 mm	1500325-08	1500325-12	1500325-15	1500325-18	1500325-23	1500325-28	1500325-33	1500325-38	3.75 mm
3.5 mm	1500350-08	1500350-12	1500350-15	1500350-18	1500350-23	1500350-28	1500350-33	1500350-38	5.50 mm
4.0 mm	1500400-08	1500400-12	1500400-15	1500400-18	1500400-23	1500400-28	1500400-33	1500400-38	5.50 mm

*Expanded sizes as compared to XIENCE Alpine™.

STENT SPECIFICATIONS		DELIVERY SYSTEM SPECIFICATIONS							
Stent Design	MULTI-LINK™, 3-3-3, Nonlinear Link	Nominal Pressure	9 atm for 2.0-2.5 mm; 12 atm for 2.75-4.0 mm						
Stent Material	L-605 Cobalt Chromium	Rated Burst Pressure	16 atm for All Diameters						
Drug	Everolimus	Shaft Measurements	Proximal 2.1F/0.71 mm Distal 2.7F/0.89 mm						
Drug Dose	1 µg/mm²	Min. GC/Sheath Diameter	5F/0.056"/1.42 mm						
Polymer	Fluorinated Copolymer	Balloon Material	Pebax[†] 72D						
Strut Thickness	0.0032"	Crossing Profile	0.039" (3.0 x 18 mm)						
MRI Compatibility	MR Conditional (see IFU for specific conditions)	Tip Entry Profile	0.017" (3.0 x 18 mm)						
Shortening	0% (nominal expansion)	Working Catheter Length	145 cm						
Post-Dilatation Limit	<table border="0"> <tr> <td>Sizes</td> <td>Post-Dil Limit</td> </tr> <tr> <td>2.0-3.25 mm</td> <td>3.75 mm</td> </tr> <tr> <td>3.5-4.0 mm</td> <td>5.5 mm</td> </tr> </table>	Sizes	Post-Dil Limit	2.0-3.25 mm	3.75 mm	3.5-4.0 mm	5.5 mm		
Sizes	Post-Dil Limit								
2.0-3.25 mm	3.75 mm								
3.5-4.0 mm	5.5 mm								

Information contained herein for distribution outside the U.S. only.

Check the regulatory status of the device before distribution in areas where CE marking is not the regulation in force.

©2019 Abbott. All rights reserved. AP2944678-OUS Rev. B

Page 10 of 11

CAUTION: This product is intended for use by or under the direction of a physician. Prior to use, reference the Instructions for Use, inside the product carton (when available) or at eifu.abbottvascular.com or at medical.abbott/manuals for more detailed information on Indications, Contraindications, Warnings, Precautions and Adverse Events. **Information contained herein for DISTRIBUTION outside the U.S. only.** Check the regulatory status of the device in areas where CE marking is not the regulation in force.

Tests performed by and data on file at Abbott.

Illustrations are artist's representations only and should not be considered as engineering drawings or photographs. Photos on file at Abbott.

Abbott International BVBA

Park Lane, Culliganlaan 2B, 1831 Diegem, Belgium, Tel: 32.2.714.14.11

[™] Indicates a trademark of the Abbott Group of Companies.

[‡] Indicates a third-party trademark, which is property of its respective owner.

www.cardiovascular.abbott

©2019 Abbott. All rights reserved. AP2944678-OUS Rev. B

